



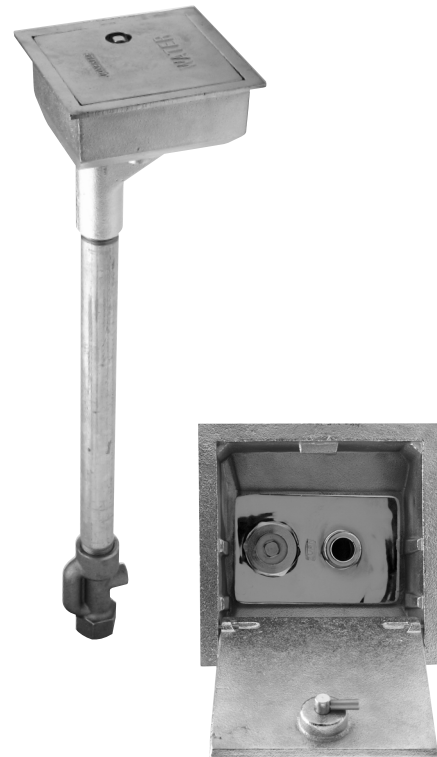
Z1361 Trouble-shooting Guide

PROBLEM	CAUSE	SOLUTION
Hydrant will not operate when turned on	Water supply is shut off	Turn on water supply
Cannot turn the hydrant on with key	Hydrant hasn't been used for a long time - "O" ring has adhered to operating screw and head	Follow steps 1-2, 4 and 7-8 of the Service Guide
Water does not shut completely off when hydrant is turned off	Debris between seat and washer	Follow steps 1-3 and 6-8 of the Service Guide. Clean by turning water supply on and flush hydrant
	Washer is worn out	Follow steps 1-3 and 5-8 of the Service Guide
	Wire draw in seat	Replace seat
Water is flowing out of the hydrant drainage port when the hydrant is turned on	Washer guide "O" rings are broken or missing	Follow steps 1-3 and 5-8 of the Service Guide
Hydrant exhibits low flow	Water supply to hydrant is restricted	Check water supply to ensure that all upstream valves are fully open

Z1361 Ground Hydrant

Encased • Non-Freeze

Maintenance and Service Instructions



The Zurn Hydrant has been engineered to provide reliable performance year after year. However, if servicing is required, it is recommended that you consult the trouble-shooting guide at the left. The trouble-shooting guide was developed to reduce maintenance time by providing the user with appropriate service instructions.

Step 1: Shutting Off the Water Supply to the Hydrant

Locate the supply shut-off valve and rotate until water supply is off.

Step 2: Removing the Face Nut and Adjacent Components

Using crescent wrench or 1-1/2 inch open-end wrench, remove the face nut (4) from head (1) by turning counter clockwise.

Step 3: Removing the Internal Operating Assembly

The internal operating assembly (5-11 and 17) can be removed by gripping the square end of the operating screw (5) with a pair of pliers and pulling straight out.

If the operating screw "O" ring was not the reason for service - skip to step 5.

Step 4: Replacing the Operating Screw "O" Ring

Remove the operating screw (5) from operating coupling (7) by turning clockwise and slip the old "O" ring (6) off, and replace with new "O" ring (6). Reinstall operating screw (5) into operating coupling (7) by turning counter clockwise.

(NOTE: Lubricate the operating screw (5) threads and the "O" Ring (6) with Lubriplate FGL-2 if needed.)

If the hydrant shutoff washer and washer guide "O" rings were not the reason for service - skip to step 8.

Step 5: Replacing the Hydrant Shutoff Washer and Washer Guide "O" Rings

Remove #10 - 24 NC x 3/8 screw (11) using a flat screwdriver and turning screw (11) counter clockwise, remove washer (10) and replace with new washer (10) and new screw (11) turning screw clockwise until tight. Remove old "O" rings (17) and replace with new "O" rings (17). (NOTE: Lubricate the "O" rings (17) with Lubriplate FGL-2 if needed.)

Step 6: Replacing the Internal Operating Assembly

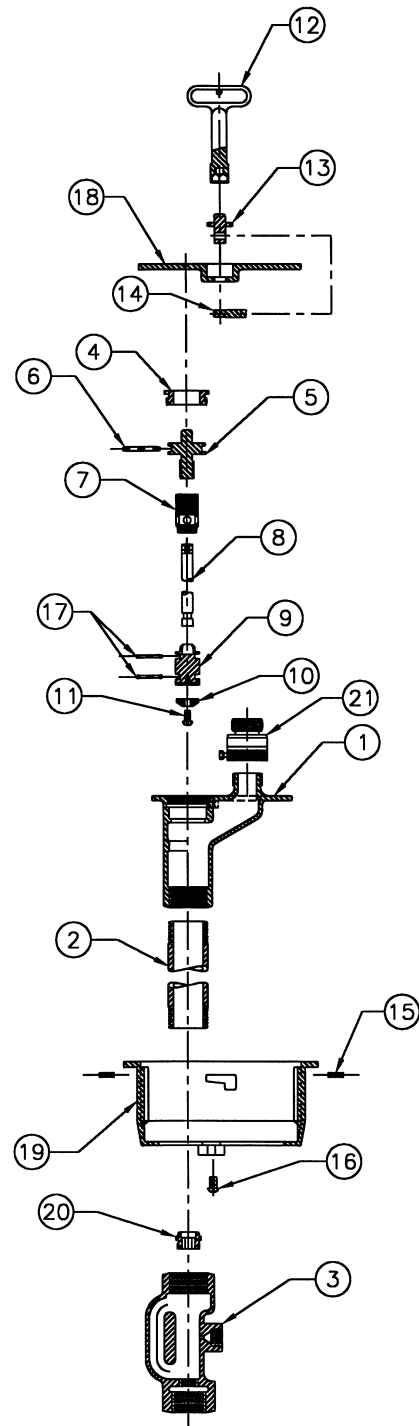
There is a flat or a V-notched boss inside of the hydrant head (1) that keeps the operating coupling (7) from rotating when hydrant is turned on and off. With operating screw (5) turned counter clockwise into operating coupling (7) until it stops, and making sure that a flat side or corner of operating coupling (7) lines up with appropriate boss, reinsert the internal operating assembly into the hydrant.

Step 7: Replacing the Face Nut

Insert face nut (4) into head (1), and rotate clockwise until hand tight, then using a crescent wrench or 1-1/2 inch open end wrench, snug nut (4) tight.

Step 8: Turning On the Water Supply

Locate the water supply shut-off valve and rotate until water supply is on.



ZURN PLUMBING PRODUCTS GROUP

1801 PITTSBURGH AVENUE

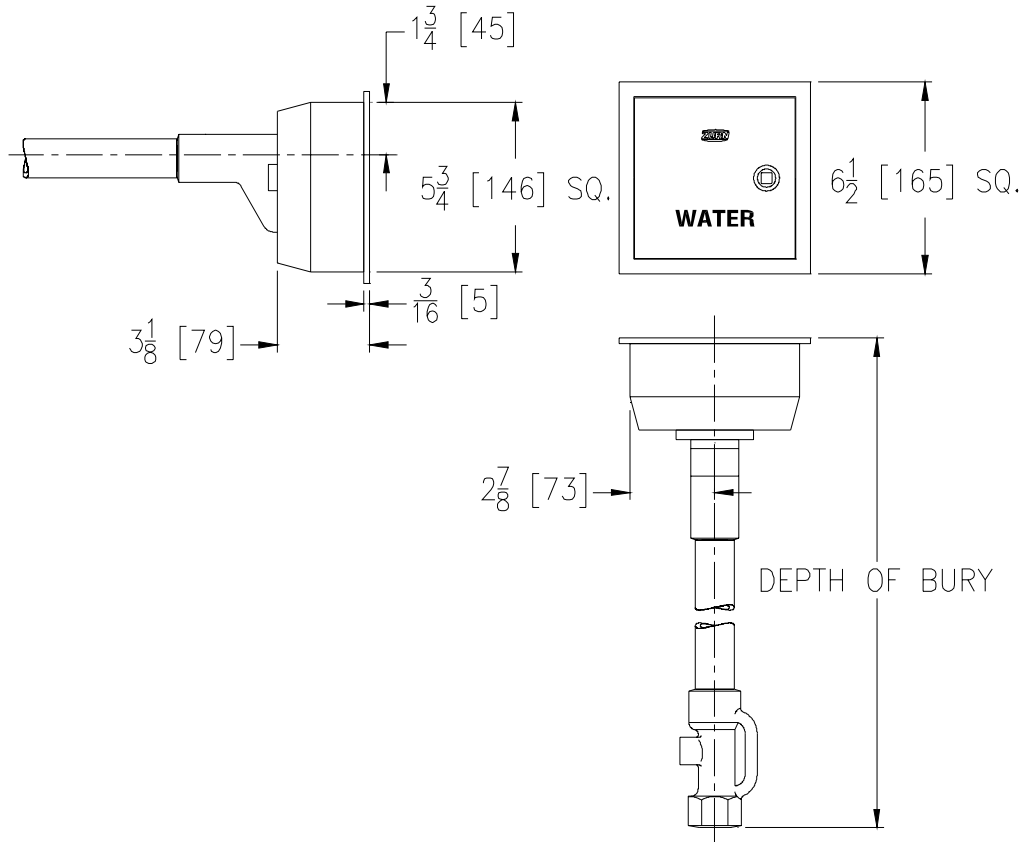
ERIE, PA 16502

PHONE: 814/455-0921

FAX: 814/875-1402

WEBSITE: www.zurn.com

Dimensional Data (inches and [mm]) are Subject to Manufacturing Tolerances and Change Without Notice



Depth of Bury in Feet [mm]	Approx. Wt. Lbs. [kg]
2 [610]	17 [8]
3 [914]	21 [10]
4 [1219]	25 [11]
5 [1524]	33 [15]
6 [1829]	39 [28]
7 [2134]	43 [20]
8 [2438]	47 [21]

ENGINEERING SPECIFICATION: Z1361 Encased, non-freeze ground hydrant for flush with grade or finished floor installation, complete with galvanized steel casing, all bronze interior parts, replaceable bronze seat and seat washer, non-turning operating rod with free-floating compression closure valve, and 3/4 [19] female IP inlet connection. Chrome-plated bronze box and hinged cover. Hydrant is equipped with a tapped 1/4 [6] drain port in the valve housing, and 3/4 [19] hose connection.

OPTIONS (Check/specify appropriate options)

SUFFIXES

- ___ -CL Cylinder Lock
- ___ -VB 3/4 [19] Adapter Vacuum Breaker
- ___ -RK Hydrant Parts Repair Kit