

# AQUASPEC FAUCETS

MODEL – Z81000-XL SERIES  
SINGLE CONTROL FAUCET



## TECHNICAL INFORMATION

---

**FLOW:** 2.2 GPM [8.3 L] VARIABLE ORIFICE AERATOR\*

**MAXIMUM PRESSURE:** 125 PSI

**CARTRIDGE STYLE:** CERAMIC DISC MIXING CARTRIDGE WITH TEMPERATURE LIMIT STOP

\* OTHER AERATORS AVAILABLE BY REQUEST

---

## INSTALLATION INSTRUCTIONS

1. MOUNT GASKET (ITEM #7) ONTO SHANKS OF FAUCET BODY (ITEM #6).
  2. PLACE FAUCET WITH GASKET ON SINK THROUGH PRE-DRILLED MOUNTING HOLES IN SINK.
  3. SECURE FAUCET (ITEM #6) TO SINK USING MOUNTING NUTS (ITEM #8A). **DO NOT OVER TIGHTEN.**
  4. ATTACH LAVATORY SUPPLIES TO SHANKS WITH RISER NUTS (ITEM #8B).
  5. OPTIONAL:           POP-UP DRAIN (-P)  
                          GRID STRAINER DRAIN (-G)  
                          INSTALL POP-UP DRAIN OR GRID STRAINER DRAIN IN SINK OUTLET AND PLUMB WASTE CONNECTION.
  6. TURN SUPPLY WATER ON AND OPERATE FAUCET CHECKING FOR LEAKS.
  7. INSTALL AERATOR INTO FAUCET AND HAND TIGHTEN INTO FAUCET SPOUT. IT MAY BE NECESSARY TO REMOVE AND CLEAN THE AERATOR AT START UP.
- 

## MAINTENANCE

1. YOUR ZURN FAUCET HAS A HIGHLY POLISHED NICKEL CHROME PLATED FINISH. CLEAN WITH SOAP AND WATER OR A MILD CLEANER WHICH IS SAFE FOR CHROME PLATING. DO NOT USE ACIDS OR TOILET BOWL CLEANER AS THEY WILL DAMAGE THE FINISH.
2. AQUASPEC FAUCETS CONTAIN CERAMIC MIXING CARTRIDGES WHICH REQUIRE NO MAINTENANCE. TO REMOVE AND REPLACE THE CARTRIDGE:
  - 2.1. REMOVE HOT/COLD INDEX BUTTON (ITEM #1C) BY CAREFULLY PRYING LOOSE FROM UNDERSIDE OF HANDLE (ITEM #1A).
  - 2.2. LOOSEN SET SCREW (ITEM # 1B) IN HANDLE.
  - 2.3. REMOVE HANDLE FROM CARTRIDGE STEM.
  - 2.4. LOOSEN AND REMOVE CARTRIDGE CAP (ITEM # 2).
  - 2.5. LOOSEN AND REMOVE CARTRIDGE RETAINING NUT (ITEM #3).
  - 2.6. PULL CERAMIC MIXING CARTRIDGE (ITEM #4) BY PULLING ON STEM WHILE WIGGLING FROM SIDE-TO-SIDE.
  - 2.7. INSTALL NEW CARTRIDGE USING THE ALIGNMENT PINS FOR PROPER ORIENTATION AND PROPER SEATING IN THE FAUCET BODY.
  - 2.8. REINSTALL HANDLE ASSEMBLY BY REVERSING STEPS 2.1 THROUGH 2.5.
3. TEMPERATURE LIMIT ADJUSTMENT – THE Z81000-XL FAUCET MAY BE ADJUSTED TO LIMIT THE MAXIMUM OPERATING TEMPERATURE.
  - 3.1. REMOVE CERAMIC MIXING CARTRIDGE (ITEM #4) PER MAINTENANCE INSTRUCTIONS 2.1 THROUGH 2.6 ABOVE.
  - 3.2. REMOVE RED TEMPERATURE LIMIT RING FROM BLUE MIXING CARTRIDGE.
  - 3.3. ROTATE RED TEMPERATURE LIMIT RING CLOCKWISE TO INCREASE MAXIMUM TEMPERATURE OR COUNTERCLOCKWISE TO DECREASE MAXIMUM TEMPERATURE. RED TEMPERATURE LIMIT RING IS MARKED WITH ARROWS AND +/- TO INDICATE DIRECTION OF ROTATION AND EFFECT ON MAXIMUM TEMPERATURE.
  - 3.4. REPLACE RED TEMPERATURE LIMIT RING IN DESIRED ORIENTATION.
  - 3.5. REINSTALL HANDLE ASSEMBLY BY REVERSING STEPS 2.1 THROUGH 2.5.
  - 3.6. TEST MAXIMUM TEMPERATURE FOR ACCEPTABILITY AND REPEAT STEPS 3.1 THROUGH 3.5 IF NECESSARY.

Form # CF1199	Date: 7/5/11
C.N. No. 127876	Rev. B

PAGE 1 OF 2

ZURN INDUSTRIES, LLC ♦ COMMERCIAL BRASS OPERATION ♦ 2640 SOUTH WORK STREET ♦ FALCONER NY 14733

Phone: 1-800-997-3876 ♦ Fax: 1-919-775-3541 ♦ www.zurn.com

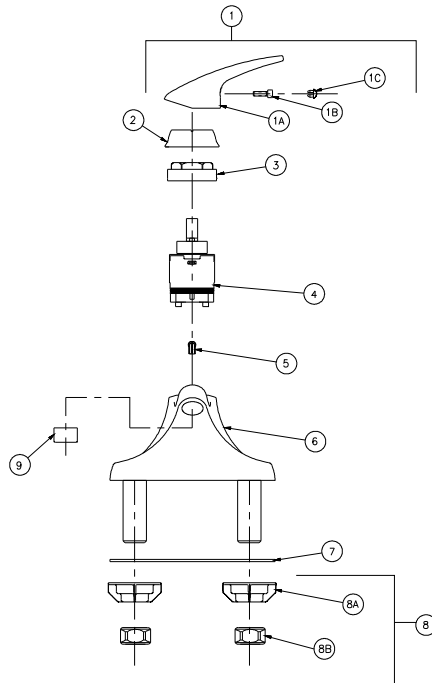
In Canada: ZURN INDUSTRIES LIMITED ♦ 3544 Nashua Drive ♦ Mississauga, Ontario L4V1L2 ♦ Phone: 905/405-8272 Fax: 905/405-1292

## REPAIR PARTS

G67917	SINGLE CONTROL HANDLE ASSEMBLY
G60502	MOUNTING HARDWARE
92842001	CERAMIC MIXING CARTRIDGE
62795003	RETAINING NUT
92026001	GASKET

## TROUBLE SHOOTING GUIDE

PROBLEM	CAUSE	SOLUTION
FAUCET LEAKS FROM UNDER FAUCET HANDLE. ALL SUPPLIES ARE ON.	CARTRIDGE RETAINING NUT TOO LOOSE	REMOVE FAUCET HANDLE. TIGHTEN CARTRIDGE RETAINING NUT. DO NOT OVER TIGHTEN. TIGHTEN UNTIL NUT IS SNUG
NO WATER COMES OUT OF FAUCET SPOUT. ALL SUPPLIES ARE ON.	AERATOR IS CLOGGED.	REMOVE AERATOR. REMOVE DEBRIS AND REINSTALL AERATOR.
WATER DEFLECTS AT AN ANGLE FROM THE FAUCET SPOUT	AERATOR HAS DEBRIS	REMOVE AERATOR. REMOVE DEBRIS AND REINSTALL AERATOR.



Item	Part Number	Description	Qty.	Item	Part Number	Description	Qty.
1	G67917	Handle Assembly	1	5	92434002	Pop-Up Hole Plug	1
1A	NA	Handle	1	6	G67938	Body Assembly	1
1B	69908003	Cap Head Screw	1	7	92026001	Gasket	1
1C	NA	Index	1	8	G60502	Mounting Hardware	1
2	92041001	Escutcheon	1	8A	59530002	Mounting Nut	2
3	62795003	Retaining Nut	1	8B	59532001	1/2" NPSM Riser Nut	2
4	92842001	Cartridge Assembly	1	9	G63505	13/16"-27 Aerator	1