

# AQUASPEC<sup>®</sup> FAUCETS

MODEL - Z84300-XL SERIES  
SINK FAUCET



## TECHNICAL INFORMATION

---

**MAXIMUM PRESSURE:** 125 PSI  
**MAXIMUM TEMPERATURE:** 160° F  
**HANDLE NUT TORQUE:** 15-20 FT - LBS.  
**CARTRIDGE STYLE:** QUARTER TURN CERAMIC DISK

---

## INSTALLATION INSTRUCTIONS

1. 1/2" IP NIPPLE SHOULD PROTRUDE 3/8" FROM THE FINISHED WALL ON 8" CENTERS. SUPPLY PIPES SHOULD BE SECURED TO SUPPORT THE FAUCET.
  2. APPLY PIPE SEALANT TO 1/2" THREADS OF SUPPLY PIPE AND SCREW SUPPLY ARM ASSEMBLY (ITEM #2) ONTO PIPE. POSITION SUPPLIES SO THAT THE BODY CONNECTIONS END UP AT 8" CENTERS ON A HORIZONTAL PLANE.
  3. INSERT SINK FAUCET BODY (ITEM #1D) TO SUPPLY ARMS PLACING GASKET (ITEM #2A) BETWEEN BODY AND SUPPLY ARM.
  4. ASSEMBLE SPOUT TO BODY USING HARDWARE.
  5. INSTALL WALL BRACE BY SCREWING THE SUPPORT ROD INTO THE THREADED SPOUT CONNECTION. ADJUST THE SUPPORT ROD TO DESIRED LENGTH AND SECURE TO FINISHED WALL USING THE TWO WOOD SCREWS PROVIDED.  
  
NOTE: SUPPORT FOR FINISHED WALL IS RECOMMENDED WHERE WALL BRACE MOUNTS FOR MAXIMUM SUPPORT.
  6. TURN WATER SUPPLY ON AND OPERATE FAUCET CHECKING FOR LEAKS.
  7. IT MAY BE NECESSARY TO SHUT WATER OFF AND REMOVE CARTRIDGES TO CLEAN SUPPLY LINES. CARTRIDGES CAN BE REMOVED BY FIRST REMOVING THE HANDLES. COLOR INDEXES CAN BE REMOVED BY INSERTING A PIN INTO THE HOLE ON THE UNDERSIDE OF THE HANDLE. AFTER THE HANDLES HAVE BEEN REMOVED UNSCREW THE HANDLE NUTS AND PULL OUT ON THE CARTRIDGE. ZURN WILL SUPPLY HANDLE PORT PLUGS (ZURN PART #61094001) AT YOUR REQUEST.
  8. REPLACE CARTRIDGES IN BODY AND HAND TIGHTEN HANDLE NUTS. PLACE HANDLES ON THE CARTRIDGE STEM AND LOCATE THEM AS DESIRED. TIGHTEN HANDLE NUTS.
  9. REPLACE HANDLE SCREWS AND COLOR INDEX BUTTON.
  10. IF NECESSARY, INSTALL AERATOR ONTO SPOUT AND HAND TIGHTEN. IT MAY BE NECESSARY TO UNSCREW AND CLEAN AERATOR AT START-UP.
- 

**CAUTION-FOR INSTALLATION WITH ATMOSPHERIC VACUUM BREAKERS (AVB'S).** THIS DEVICE SHOULD NEVER BE USED IN INSTALLATIONS THAT ARE UNDER CONTINUOUS PRESSURE WHEN INSTALLED WITH SPOUTS HAVING ATMOSPHERIC VACUUM BREAKERS (AVB'S). THEREFORE, NEVER PLACE A SELF-CLOSING, SHUT-OFF VALVE DOWN-STREAM OF AN AVB.

---

## SERVICE INSTRUCTIONS

1. YOUR ZURNAQUASPEC FAUCET IS FURNISHED WITH INTEGRAL SUPPLY STOPS (ITEM #4B) TO PROVIDE A COMPLETE SHUT OFF OF THE WATER SUPPLY. TURN SCREW STOPS INTO BODY USING 5/16" HEX KEY WRENCH UNTIL WATER SHUTS OFF COMPLETELY. TURN STOP NO MORE THAN THREE (3) COMPLETE TURNS TO ACTIVATE WATER FLOW.

ZURN INDUSTRIES, LLC ♦ COMMERCIAL BRASS OPERATION ♦ 2640 SOUTH WORK STREET ♦ FALCONER NY 14733

Phone: 1-800-997-3876 ♦ Fax: 1-919-775-3541 ♦ www.zurn.com

In Canada: ZURN INDUSTRIES LIMITED ♦ 3544 Nashua Drive ♦ Mississauga, Ontario L4V1L2 ♦ Phone: 905/405-8272 Fax: 905/405-1292

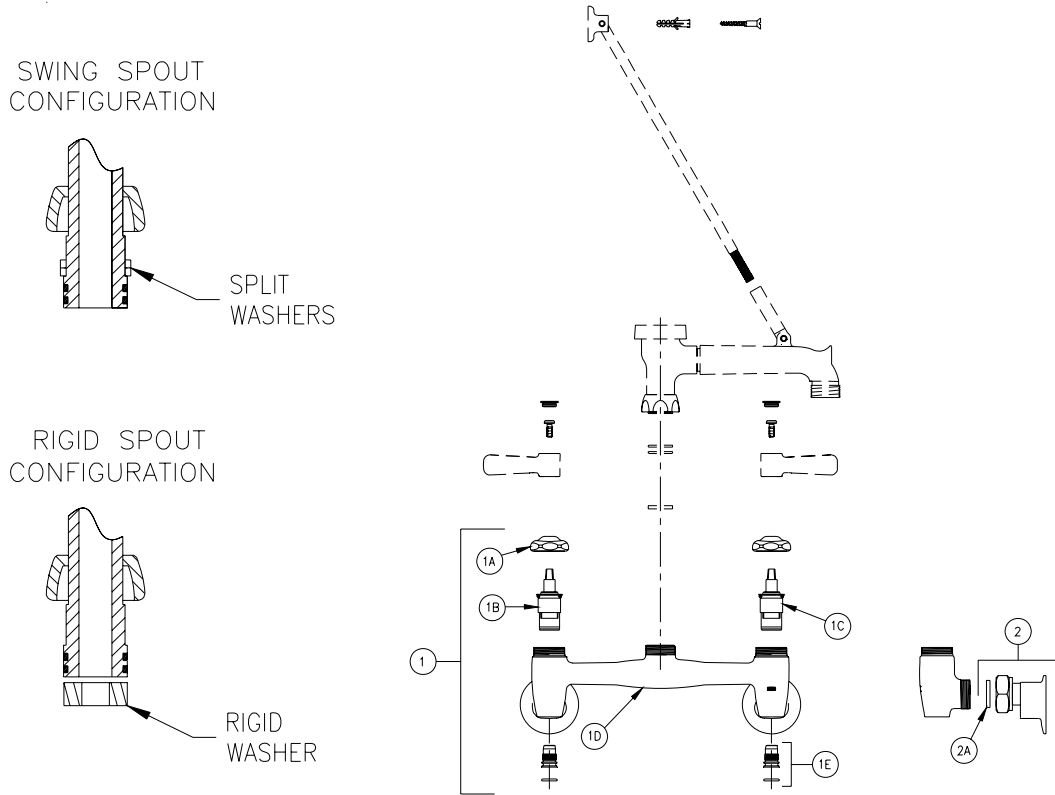
# MAINTENANCE

1. YOUR ZURN AQUASPEC FAUCET HAS A HIGHLY POLISHED NICKEL CHROME PLATED FINISH. CLEAN WITH SOAP AND WATER OR A MILD CLEANER WHICH IS SAFE FOR CHROME PLATING. DO NOT USE ACIDS OR TOILET BOWL CLEANER AS THEY WILL DAMAGE THE FINISH.
2. AQUASPEC FAUCETS CONTAIN CERAMIC DISK CARTRIDGES WHICH REQUIRE NO MAINTENANCE. TO REMOVE THE CARTRIDGE, SHUT THE WATER OFF, LOOSEN THE HANDLE NUTS AND PULL UP ON THE CARTRIDGE.

# REPLACEMENT PARTS

COLD WATER CARTRIDGE	59517005
HOT WATER CARTRIDGE	59517006
INDEX BUTTONS	G60500
STOP PLUG ASSEMBLY	G67968

## Z843M1-XL PICTURED



## Z84300-XL PARTS LIST

ITEM	QTY	ITEM	QTY
1	G67998	SINK BODY ASSEMBLY XL	1
1A	59440001	HANDLE NUT	2
1B	59517005	SHORT COLD CARTRIDGE XL	1
1C	59517006	SHORT HOT CARTRIDGE XL	1
1D	N/A	SINK BODY XL	1
1E	G67968	STOP PLUG ASSEMBLY XL	2
	N/A	STOP PLUG XL	1
	N/A	O-RING	1
2	G67882	SHORT SUPPLY ARM ASS'Y.	2
2A	59748001	GASKET	2