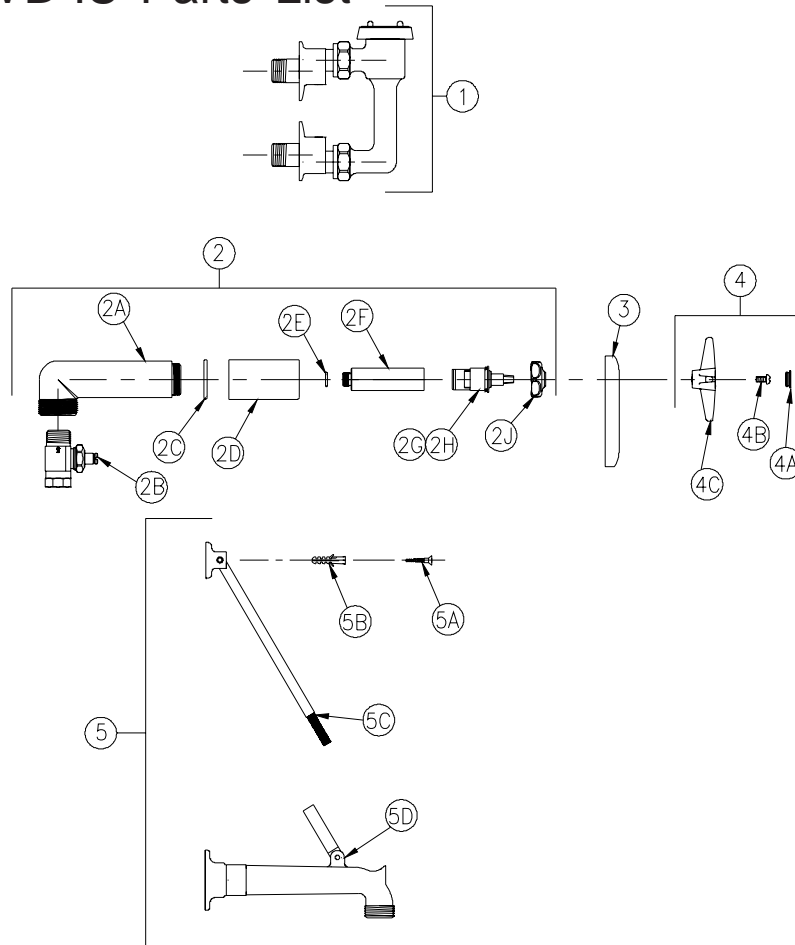


CLINICAL SERVICE SINK FAUCET



Z873E2-EVB-IS Parts List



| Item | Part Number | Description | Qty. |
|------|-------------|--|------|
| 1 | Z80000-EVB | Elevated Vacuum Breaker Assembly | 1 |
| 2 | 62000001 | Shower Valve S/A with Integral Stops and Outlet Up | 1 |
| 2A | 69712001 | Body Outlet Up | 1 |
| 2B | 61567001 | Integral Stop S/A | 2 |
| 2C | 58155024 | O-Ring | 2 |
| 2D | 61524002 | Shower Valve Sleeve | 2 |
| 2E | 58155012 | O-Ring | 2 |
| 2F | 61473002 | Shower Inlet | 2 |
| 2G | 59517001 | Short Cold Cartridge | 1 |
| 2H | 59517002 | Short Hot Cartridge | 1 |
| 2J | 59440001 | Handle Nut | 2 |
| 3 | G61999 | Tear Drop Escutcheon | 2 |
| 4 | G60503 | Vandal Resistant Four Arm Handles | 1 |
| 4A | G60500 | Hot/Cold Color-Coded Indexes | 1 |
| | 59454001 | Hot Index | 1 |
| | 59454002 | Cold Index | 1 |
| 4B | 62464001 | 10-32 Screw | 2 |
| 4C | 59518001 | Four Arm Handle | 2 |
| 5 | G61995 | Wall Mounted Spout S/A | 1 |
| 5A | 62358001 | 1-1/2" Flat Head Wood Screw | 2 |
| 5B | 62539001 | Plastic Anchor | 2 |
| 5C | 60865001 | Wall Bracket Rod Assy. | 1 |
| 5D | 59455003 | Spout | 1 |

ZURN INDUSTRIES, INC. ♦ COMMERCIAL BRASS OPERATION ♦ 2640 SOUTH WORK STREET ♦ FALCONER NY 14733

Phone: 1-716-665-1132 ♦ Fax: 1-716-665-1135 ♦ World Wide Web: www.zurn.com

In Canada: ZURN INDUSTRIES LIMITED ♦ 3544 Nashua Drive ♦ Mississauga, Ontario L4V1L2 ♦ Phone: 905/405-8272 Fax: 905/405-1292